

- permanent deformation of a metallic part,
 - modification to the product (welding, drilling...),
 - deep corrosion (that do not disappear after a light rubbing with glass paper),
 - locking mechanism malfunction.
- Do not continue to use a product after a major fall, because a damage may have occurred, even when no external signs are visible.

LIFETIME:

Lifetime of device is of 10 years from the date of manufacture under the following conditions: stocking is made as described in Storage and Maintenance sections, pre use, after use and periodic controls at least once every 12 months do not show any malfunction, deformation, wear, etc., maintenance has been made as in Maintenance section, the device has been correctly used, not exceeding of the breaking load.

In extreme cases the lifetime of the product can be reduced to one single use through exposure to for example any of the following factors: chemicals, extreme temperature, major fall or loads, intense use, damage to components of the product.

CASES TO RETIRE YOUR EQUIPMENT:

Immediately retire the devices if:

- it fails to pass inspection,
- it has been subjected to a major fall or load,
- you do not know its full usage history,
- it is non conforming to updated norms, not suitable or compatible to the present techniques,
- you have any doubts as to its integrity.

To prevent future use, destroy retired equipment.

When suspect that the product is no more safety and reliable, please contact the manufacturer or the distributor.

PRODUCT OBSOLESCENCE

There are numerous reasons why a product may be judged obsolete and thus retired before the end of its actual lifetime. Examples include: changes in applicable standards, regulations, or legislation; development of new techniques, incompatibility with other equipment, etc.

3 YEAR GUARANTEE:

This product is guaranteed for 3 years against any faults in materials or manufacture. Limitations of guarantee are: normal wear, modifications or alterations, incorrect storage, corrosion, damage due to accidents and negligence, uses for which this product is not designed.

USER CARD

DEVICE NAME MODEL	CATALOGUE NO.
NUMBER OF DEVICE	DATE OF MANUFACTURE
USER NAME	
DATE OF INTRODUCTION INTO USE	
DATE OF PURCHASE	

TECHNICAL SURVEYS

	SURVEY DATE	REASONS FOR SURVEY OR REPAIR	DAMAGES FOUND, REPAIRS PERFORMED, OTHER NOTES	DATE OF NEXT SURVEY	SIGNATURE OF PERSON RESPONSIBLE
1					
2					
3					
4					
5					

PROTEKT, 93-403 ŁÓDŹ
ul. Starorudzka 9
TEL.: (+48 42) 680 20 83
FAX: (+48 42) 680 20 93
www.protekt.com.pl

Notified body, at which the European certification was issued and which supervises the production of the equipment:
APAVE SUDEUROPE SAS - 8 rue Jean-Jacques Vernazza - Z.A.C. Saumaty-Séon
CS-60193 - 13322 MARSEILLE Cedex 16, France - No. 0082

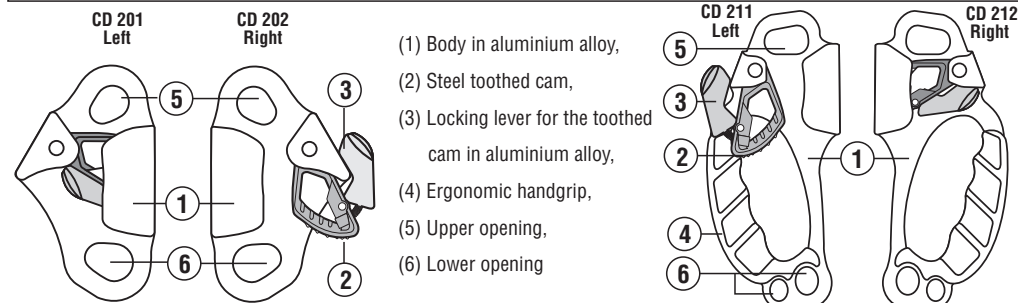
Instruction Manual
EN 567:2013
CE 0082

ROPE CLAMPS
CD 201 CD 202 CD 211 CD 212

Ref.: CD 202 Ref.: CD 212 Ref.: CD 201 Ref.: CD 211

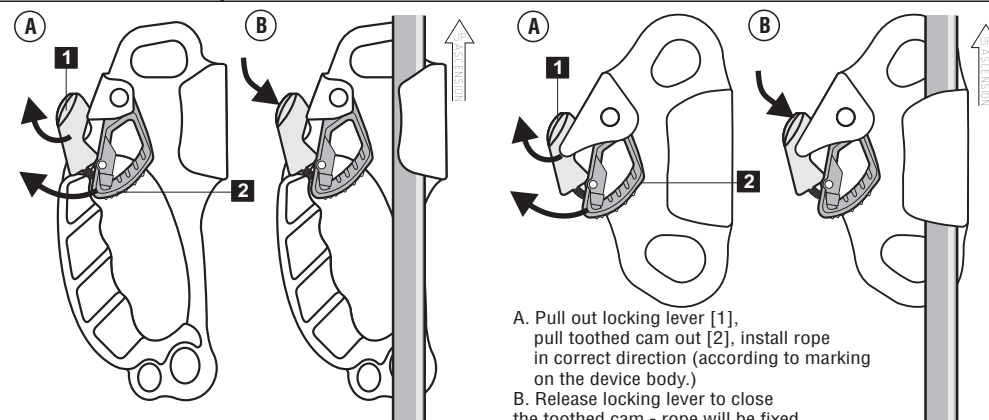
PROTEKT®

Specification



- (1) Body in aluminium alloy,
- (2) Steel toothed cam,
- (3) Locking lever for the toothed cam in aluminium alloy,
- (4) Ergonomic handgrip,
- (5) Upper opening,
- (6) Lower opening

Installation the rope

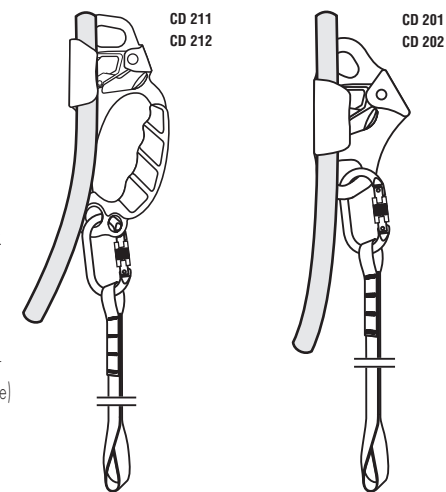


- A. Pull out locking lever [1], pull toothed cam out [2], install rope in correct direction (according to marking on the device body.)
- B. Release locking lever to close the toothed cam - rope will be fixed.

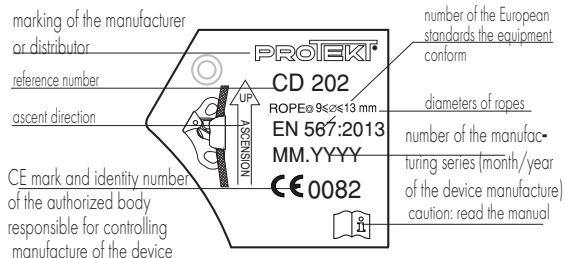
Warning

Use only approved rope with the system: conforming EN 1891/A:1998, EN 892:2012. USE with PA-10-100-24K, USE with PA-11-100-24K, USE with PA-12-100-24K ropes. Diameters of ropes: ≤ 9 mm and ≥ 13 mm. Protect the rope from sharp or abrupt edges. Rope strength will be seriously reduced or rope may fail.

Connection



Marking

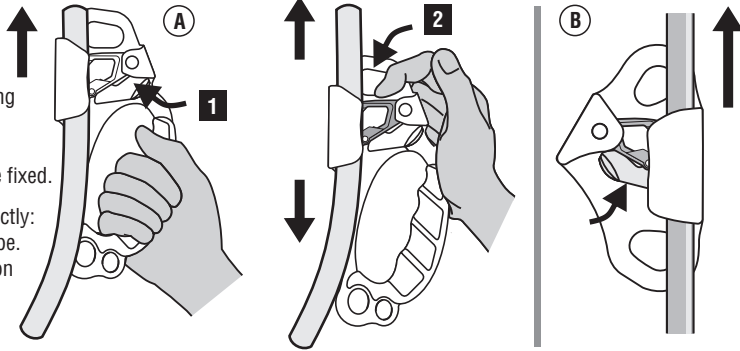


CE mark and identity number of the authorized body responsible for controlling manufacture of the device

Addition 07.2015

Progression

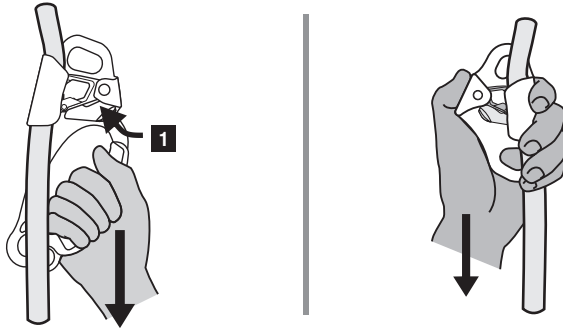
- A. Pull out locking lever [1], pull toothed cam out [2], install rope in correct direction (according to marking on the device body.)
- B. Release locking lever to close the toothed cam - rope will be fixed.



The handle must be pulled correctly: downward and parallel to the rope. To avoid slippage of the device on rope, do not load it at an angle with the rope.

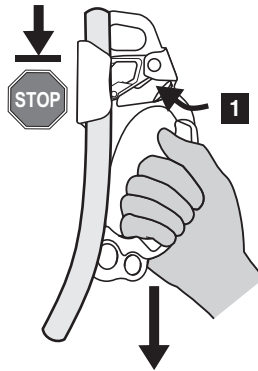
Locking

Check the toothed cam is closed and locked.



Function test

Each time the device is installed onto the rope, verify that it jams in the desired direction.



Warning

- rope clamps are not fall-arrester devices:
- always keep the rope clamp above the point where it is hooked to the harness,
- never go beyond the belay point with the rope clamp underneath the knot!
- never push the rope clamp up against the knot: it could be very difficult to release it, if not impossible,
- use your thumb to work the toothed cam to make the rope clamp slide downwards, do not touch the tooth's safety device, risk of accidental opening!
- never use the ventral rope clamp without connecting the upper part of the harness or chest piece to the upper opening.

GENERAL INFORMATION:

This equipment should be used only by trained and competent persons. Otherwise the user should be under the direct supervision of a trained and competent person. This notice will not teach you the techniques for climbing, alpinism or any other associated activity: you must have received qualified instruction before using this product. Climbing, and any other activity for which these products may be used, is inherently dangerous. The consequences of incorrect selection, misuse or poor maintenance of equipment could result in serious injury or death. The user must be medically capable to control their own security and any possible emergency situations. The product should only be used as instructed and no alterations should be made to it. It may be used in conjunction with any appropriate items of suitable specification and according to the EN standards, with due consideration to the limitations of each individual piece of equipment. We recommend to treat the product as personal.

MAINTENANCE:

Cleaning of the metallic parts: rinse in clean water where necessary, then dry naturally away from direct sources of heat. Preserve the legibility of the product's markings. Temperature: keep this product below 50°C so as not to affect the performance of the product.

Lubrication: frequently lubricate the mobile parts with silicone based oil. Avoid contact between oil and textile parts. Lubrication must be done after cleaning and completely drying. Clean and lubricate your device after every use in marine environment.

STORAGE:

After cleaning, drying and lubrication store your product in a cool, dry, fresh (temperature 5-40°C) and safe (avoid U.V. radiation) place, chemically neutral (absolutely avoid salty envions) places. Avoid heat sources, exposure to UV, high humidity, sharp edges, corrosive substances or other possible detrimental conditions.

TRANSPORTATION:

Protect the equipment against risks mentioned in Storage and Maintenance sections.

RESPONSIBILITY:

The manufacturer or the distributor, will not accept any responsibility for damage, injury or death resulting from misuse of or from modifications to our products. It is the user's responsibility at all times to ensure that he/she understands the correct and safe use of any equipment supplied by or from the manufacturer, that he/she uses it only for the purposes for which it is designed and that he/she practices all proper safety procedures. Before using the equipment, take all necessary steps to familiarise yourself

with rescue techniques should an emergency occur. You personally assume all the risks and responsibilities for your actions and decisions: if you are not able or not in a position to assume these, do not use this equipment.

SPECIFIC INFORMATION USE:

This rope clamp is designed for use in rock climbing, mountaineering, caving, rescue. The device is for ascending rope. It slides along the rope in one direction and jams in the other direction.

The cam's teeth initiate a clamping action that pinches the rope between the cam and the frame. The slot in the cam allows mud to be evacuated. To insert and remove the rope or accessory cord turn the cam pressing the push-button of the cam. **The raised hand of the drawing stamped on the device must point to the upper fixed end of the rope.**

Pay attention to the Up/Down indicator.

WARNING: The locking action can be reduced with dirty, oily, muddy or icy ropes, until it fails to work altogether and the device slides along the rope. This chiefly occurs with ropes with a small diameter: for this reason we recommend using a rope with a diameter of at least 10 mm.

WARNING: it is essential not to use the rope clamps with wire ropes.

Each time the device is installed onto the rope, verify that it jams in the desired direction.

The handle must be pulled correctly: downward and parallel to the rope. To avoid slippage of the device on rope, do not load it at an angle with the rope.

When traversing or passing a rebelay, if you cannot avoid oblique loads on the rope, secure the rope with your lanyard connector or put a connector in the upper connection holes.

Do not climb above the rope clamp or the anchor point and keep your lanyard under tension. In case of a fall, the energy is absorbed by a rope. The closer you get to the anchor point, the more energy-absorbing capacity of the rope is reduced, eventually becoming practically zero. Shock loading must be avoided when close to the anchor.

Short rope descent. Gently slide the device a short distance up the rope and simultaneously push down on the cam with the index finger. Do not manipulate the locking grip because this occurs a risk of involuntary opening of the cam.

REVISION:

Before and after each use inspect and make sure the product:

- has not suffered any mechanical deformation,
- is free of cracks, corrosion or wear, in particular always keep any eye on the wear condition in the sliding zone of the rope and in the opening for hooking up the connector,
- that the safety device automatically completely closes again after being released.

In addition to pre- and post- each use control, this product should be annually examined by a competent person; the recording of this check should be done on the life sheet of the product. In case of one of the following defects are present, the product should be withdrawn from service immediately:

- cracks on metallic part,